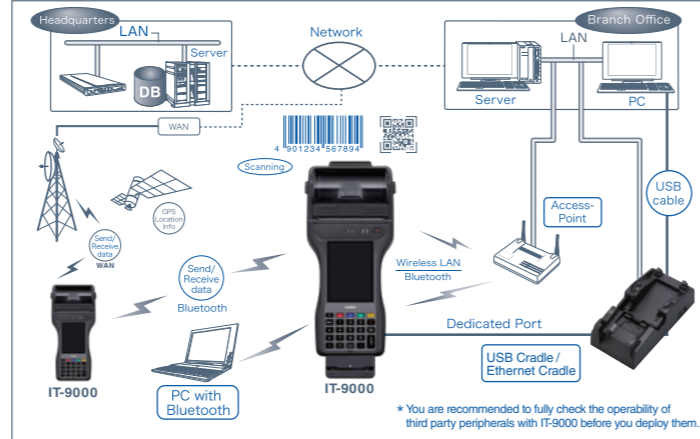


Specification

	GMC25E	GC25E	G25E	25E	G05E	05E
<b>CPU</b>	Marvel® PXA320 624MHz					
<b>OS</b>	Microsoft® Windows Mobile® 6.5 English Version					
<b>Memory</b>	RAM	256MB				
	ROM	256MB				
<b>Display</b>	Display	9.4cm (3.7inches) Blawiew® Color LCD with Touch Panel				
	Resolution	VGA (480 x 640 dots) 65,536 colors				
	Backlight	LED				
	Indicator	Indicator 1: Battery charging status, Indicator 2: Operating status				
<b>Printer</b>	Printing Method	Thermal line dot				
	Paper Width	80 mm or 58 mm				
	Printing Width	72 mm or 48 mm				
	Speed	28 lines per second (while printing Kanji characters)				
	Paper	Roll paper, Label paper				
	Total number of Print dots	576 (if printed on 80 mm width paper)				
	Character Size	Free double-width characters				
	Font Type	ANK, Symbolics (UPC-E, NW-7, Code39, Code128), OCR-B, user-defined characters x 128				
	Sensor	Positioning for printing				
	Type	Wide VGA (752 x 480) Monochrome Area Sensor				
<b>C-MOS Imager</b>	Aimer	Laser 650+10/-5nm, 1mW or less				
	Resolution	1D: 0.15mm, Stacked: 0.169mm, Matrix: 0.25mm				
	1D Symbolologies	GS1 DataBar Omnidirectional (RSS-14), GS1 DataBar Truncated (RSS-14 Truncated), GS1 DataBar Limited (RSS Limited), GS1 DataBar Expanded (RSS Expanded), Code128/GS1-128 (UCC/EAN128, Code39, Code11, EAN8/13, UPC-A, UPC-E, Codabar (NW7), Interleaved 2 of 5 (ITF), MSI (Plessey), IATA, Code32, ISBT)				
Stacked Symbolologies	GS1 DataBar Stacked (RSS-14 Stacked), GS1 DataBar Expanded Stacked (RSS Expanded Stacked), GS1 DataBar Stacked Omnidirectional (RSS-14 Stacked Omnidirectional), Code49, PDF417, MicroPDF, Composite, Codablock F, TLC39					
Matrix Symbolologies	Aztec, DataMatrix, Maxicode, QR Code, microQR, Han Xin Code					
<b>NFC Reader/Writer</b>	Frequency	13.56MHz				
	Contactless Smart Card	ISO14443 Type A (MIFARE™) / ISO14443 Type B / Felica™				
	RFID Tag	ISO15693(i-CODE™ SLI / Tag-it™ / my-d™)				
	Secure Access Module Slots	2 slots	3 slots	2 slots	3 slots	3 slots
<b>Wireless Communication</b>	Bluetooth	Bluetooth® version 2.0 + EDR				
	Wireless LAN	Compliant with IEEE802.11b/g standard (Maximum: 54 Mbps) Security: WPA2 / AES				
	Wireless WAN	HSDPA / UMTS / EGPRS (EDGE) / GPRS / GSM (850 / 900 / 1800 / 1900MHz)				
	GPS	12 channel-receiver				
<b>Digital Camera</b>	Imaging Element	2.0 mega pixels C-MOS				
	Function	Auto focus, LED flash				
<b>Magnetic Card Reader</b>	Standard	ISO Tracks 1, 2 and 3				

Input	Keyboard	Numeric (Alphabet) keys, Double zero key, - key, Decimal key, MENU key, Fn key, F1 to F4 keys, CLR key, BS key, ENT key, Cursor keys, Power key			
		Left Trigger key, Right Trigger key	Left Program key, Right Program key		
Interface	Touch Panel	Plastic panel (resolution 480 x 640 dots) with character input pad			
	Serial	USB (Host, Client) x 1			
Power	Card Slot	SDIO (SDHC supported) x 1			
	Audio	Microphone: Built-in (monaural), Speaker: Built-in (monaural)			
Environment	Main Power	Lithium-ion battery pack (Operating period: Approx. 20 hours and more*) * When 120 keyboard inputs made every 10 minutes			
	Memory Backup	Lithium battery (rechargeable) on board			
Dimensions/Weight	Charge Time	Approx. 5 hours			
	Dust/Splash-proof	IP54 (compliant with IEC60529 standard)			
Approx. Weight (including Battery Pack)	Drop Durability	1.5m			
	Operating Temperature	-20°C +50°C			
	W	112mm*	112mm*	112mm*	112mm*
	D	79mm**	79mm**	79mm**	79mm**
H	286mm	255mm	247mm	247mm	
	66mm*	66mm*	60mm*	60mm*	
Approx. Weight (including Battery Pack)	H	37mm**	37mm**	37mm**	37mm**
	675g	630g	625g	600g	615g

IT-9000 Series System Configuration



A Wide Array of Capabilities in A Single Terminal  
All-In-One Handheld Printer Terminal



- Thermal printer enables issuance of tickets, receipts, and other documents on the spot
- Features GPS and HSDPA-capable 3G wireless WAN with high-speed data transfer up to 7.2Mbps downstream
- The 802.11b/g standard wireless LAN is useful for sending and receiving data in offices
- Equipped with an NFC reader/writer for contactless smart cards and ISO 15693 approved RFID tags
- The C-MOS Imager can read 1D and 2D symbolologies with high speed and accuracy
- Fitted with a 2.0-megapixel digital camera with an auto focus function
- Includes a magnetic card reader for membership cards, credit cards and other cards

●CASIO is a registered trademark of CASIO Computer Co., Ltd. in Japan.  
 ●Blawiew is a trademark of CASIO Computer Co., Ltd., in Japan.  
 ●Microsoft, Windows Mobile are registered trademarks of Microsoft Corporation in the USA and/or other countries.  
 ●MIFARE, i-CODE are registered trademarks of NXP B.V.  
 ●Felica is a trademark of Sony Corporation.  
 ●Tag-it is a registered trademark of Texas Instruments Incorporated.  
 ●My-d is a registered trademark of Infineon Technologies AG.  
 ●The BLUETOOTH registered trademark is owned by Bluetooth SIG, Inc., U.S.A., and licensed to CASIO Computer Co., Ltd.  
 ●Other company and product names are generally registered trademarks or trademarks of the respective companies.  
 ●This catalogue is current as of March 2012.  
 ●Specifications in the table above are current as of March 2012, and may be changed without prior notice.  
<http://world.casio.com/system/pa/>

## Functionality, reliability and usability in a single terminal.

### The IT-9000 handheld printer terminal

The IT-9000 delivers multi-functionality to perform a variety of work operations in a single device.

A rugged body suitable for even demanding outdoor use, equipped

with a high-speed thermal printer, 3G wireless WAN, and C-MOS imager for barcode reading.

In addition, the IT-9000 has enhanced the security features to prevent information leaks.

The IT-9000 provides total support to increase the efficiency of on-site business

operations such as meter reading and traffic violation control.



## OUTDOOR

Rugged specifications that support on-site operations

### High-Resolution VGA LCD with Excellent Visibility for Outdoor User

The IT-9000 is equipped with a Blarview® LCD, a 3.7-inch colour transmissive TFT LCD with an easy-to-operate touch panel. The display provides excellent visibility indoors and in direct sunlight, and VGA-compatible high resolution (640x480pixels) supports high-definition image display content. In addition, power consumption of the backlight is only about one-third that of semi-transmissive LCDs.



### Keyboard Designed and Built for Comfortable Operation

The larger backlit keyboard ensures accurate key operation in a dark environment such as a warehouse. Since the keys are printed on the inside, the markings do not wear off. Text input using the number keys is possible.



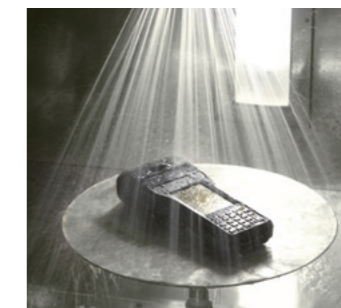
### Excellent Environmental Durability

Casio designed the IT-9000 to deliver the usability required for outdoor work. The rugged body offers improved impact resistance to withstand drops of 1.5 meters, ensuring the high durability necessary for use even under conditions of rough handling. The terminal is compliant with IP54\* dust and water-splash proof standards and designed to ensure trouble-free operation in demanding environments such as heavy rain and sandy or dusty places. In addition, it is suitable for use in sub-zero temperatures or under the blazing sun (operating temperature range of -20°C to 50°C).

\*Water splashed against the device from any direction has no harmful effects when all covers for connectors, etc. are closed.



Drop durability test



Water-splash proof test



Dust proof test

## ALL IN ONE

Integrated design that combines high operability and multi-functionality

### High-Speed Thermal Printer

The IT-9000 has a built-in high-speed thermal printer that provides to print up to 28 lines per second\* to dramatically boost work speed and efficiency. In addition, text size and fonts can be changed to suit the printer content.

\*In the case of 1-ply roll paper, new batteries (fully charged), and room temperature operation



### Built-In NFC Reader/Writer with SAM Slot

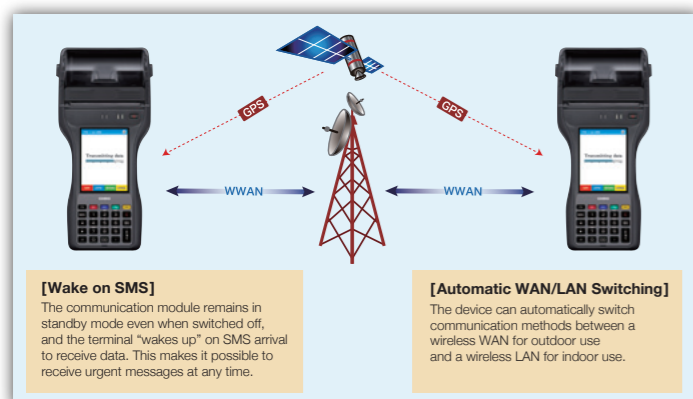
The IT-9000 is equipped with a reader/writer that supports NFCIP2, the latest short-distance wireless communication standard, and supports recognition of contactless smart cards such as FeliCa® and MIFARE® and ISO15693-compliant RFID tags(13.56MHz). A built-in antenna at the top of the device enables seamless interaction with the target smart card. A SAM (Secure Access Module) slot comes as a standard feature for applications requiring a high level of security, such as prevention of unauthorised smart card use.



### Wireless WAN for Outdoor Use\*

The IT-9000 realises real-time communication with a built-in 3G wireless WAN module\* for high-speed data transmission (HSDPA) and voice communication. In addition, GPS capabilities make it possible to acquire positional information. The IT-9000 is a highly flexible handheld printer terminal that supports wide-ranging applications in field operations. For instance, operators can record the completion of meter reading together with positioning information.

\*IT-9000-GMC25E/GC25E/G25E/G05E



#### [Contactless Cards]



- Member management, loyalty point management, and attendance management using membership cards, employee IDs, and other cards.
- The IT-9000 offers enhanced security for outside work operators by performing user authentication on log-in.

#### [Use of RFID Tags]



- During meter reading the IT-9000 helps increase input efficiency and prevent errors by reading customer information from tags.
- Reading of registered vehicle information from tags makes possible use for applications such as managing traffic violations.

### A Variety of Expansion Features

#### USB connector

The terminal is equipped with a USB connector that supports USB host/client. This expands the range of use of handheld terminals by enabling connection with external devices or cradleless connection with a PC.

#### SD card slot

The terminal comes with an SD card slot (SDHC-compatible) as a standard feature for use in applications such as operation with a high-capacity stored database for backup data or expansion of user memory.

#### Bluetooth®2.0 integrated as a standard feature

Bluetooth® Ver.2.0 (Class2) is integrated as a standard feature. This makes possible voice communication using wireless headsets.

### Built-In Magnetic Card Reader\*

The IT-9000-GMC25E is equipped with modules for reading magnetic cards for membership cards, credit cards and other cards. The card reader improves efficiency in outside work by enabling workers to send server inquiries from the spot to obtain member information, employee ID information, and other data. \*IT-9000-GMC25E

### Built-In 2D Imager\*

Some models are equipped with a C-MOS imager that can read 2D barcodes symbologies. The imager also supports reading of GS1 DataBar, the newest barcode standard (barcodes and stacked codes). \*IT-9000-GMC25E/GC25E/G25E/G05E

### 2.0 Megapixel Camera with Autofocus\*

A 2.0 megapixel colour digital camera is integrated in some models of the IT-9000. With its powerful autofocus feature, this camera can capture high quality images for such tasks as identifying damaged goods, document capture and vehicle license number identification. The capturing of digital images can be incorporated seamlessly into the work-flow of the application without the need to use a separate camera or reconcile images and data records from two different devices. The potential for enhancement to solutions, and increases in efficiency are virtually limitless. \*IT-9000-GMC25E/GC25E



### Human-Centered Design in the Uncompromising Pursuit of Usability

The IT-9000 reflects human-centered design processes applied in product development in the uncompromising pursuit of ease of use. It is surprisingly compact and light in weight for a fully featured multifunctional handheld terminal with built-in printer. The terminal was designed to be comfortable to hold for long shifts without fatigue and to provide excellent operability in outdoor environments. The rounded form of the lower part of the device and the 79-mm grip length make the IT-9000 just the right shape and size for a secure grip. The centre of gravity is optimised to fit naturally in anyone's palm. The result is a device that places little strain on the hand even during long hour operation.

Human-Centered Design	Objective	Enhancement of total product quality that customers experience
	Method	Product development based on ISO13407 (human-centered design) process
The Pursuit of Usability	Concept	Human-Centered Design

### Microsoft® Windows Mobile® 6.5

The IT-9000 series comes with Windows Mobile® Version 6.5 as the operating platform. Two editions are available: Professional for WWAN models and Classic for other models. This is the latest platform for mobile devices and PDAs and is ideally suited for use as a basis for an enterprise or business solution. Windows Mobile 6.5 brings you the latest enhancements to the PDA user interface, allows efficient handling of various wireless technologies and opens up the possibility to run existing commercially available packages and software for the Windows Mobile family of devices.

## SECURITY

Reliable security features to meet the needs of the times.

### Remote Security Features\*

Models equipped with a wireless WAN have features such as terminal lock, data erasure, location search, and other security features operable by remote control that prevent leakage of important data due to device loss or theft. For optimal security, these features can be used even when the terminal is switched off or out of service.

\*IT-9000-GMC25E/GC25E/G25E/G05E

### Log-In Authentication

The IT-9000 supports smart card-based log-in security that prevents unauthorized use, by requiring log-in authentication using employee ID cards in addition to passwords.



### Enhanced Security Features

#### Automatic Erasure of Local Data

The terminal has a function for automatically erasing data if the user does not log-on at a specified time. This prevents information leakage in the event of device loss.

#### Media Security

A security lock can be applied to SD cards used to store data to block information leakage.

### IEEE802.11b/g Wireless LAN

The IT-9000 has an integrated IEEE802.11b/g wireless LAN module. It is WPA2-compliant to ensure secure wireless communication and also supports the TKIP and AES encryption methods and authentication using 802.1x (PSK, PEAP, EAP-TLS). These communication features provide a high level of security to support worry-free real-time operation.



#### Net Search Wireless LAN Tool

The IT-9000 is equipped with Net Search, a support tool useful in the construction of wireless environments. It displays the channel usage of each access point as well as SSID, signal strength, and other information necessary for the crowded 2.4GHz band. Net Search has excellent capabilities as a radio wave environment measurement tool.