

ClassNet & ZipNet Polling Programs



Data Technology
Hardware • Software
Design • Consulting

The ASP ClassNet & ZipNet Polling Programs were written by:

ASP Microcomputers
456 North Road,
Ormond, Victoria, 3204
Australia
Telephone: (03) 9578-7600
FAX: (03) 9578-7727
email: solutions@asp.com.au
World Wide Web: <http://www.asp.com.au>

(ASP Microcomputers is a division of Grayline Holdings Pty. Ltd., A.C.N. 004 940 729)

Contents

Installing the Polling Program	1
Running the Polling Program	1
Configuring the Polling Program.....	3
Selecting Units to Poll	5
Using the Polling Program With ZipNet TimeSheet	6
Copyright, License & Limited Warranty	8

Introduction

ASP's **ClassNet Terminal** is designed to automate classroom roll marking in schools, while the **ZipNet Terminal** is designed for time and attendance applications. The ClassNet Terminal records the time with each scan, while the ZipNet Terminal records the time and day of the week. The ClassNet Terminal allows just a single scan of any particular barcode or iButton between downloads, while the ZipNet Terminal allows multiple scans.

The ClassNet and ZipNet Polling Programs are 32-bit programs designed to be run with the Windows 95, Windows 98 or Windows NT operating systems.

For ease of use with ASP's **ZipNet TimeSheet** Time and Attendance program, a special configuration option is available in the ZipNet Polling Program.

Installing the Polling Program

1. Insert the installation disk into a floppy disk drive.
2. Choose Run from the Start menu.
3. Specify the disk drive and type **setup**. For example, type **a:setup** if you're using drive A.
4. Follow the on-screen instructions.

If you wish, you can create a desktop shortcut to the Polling Program by dragging the program's icon out of the program group and onto the desktop.

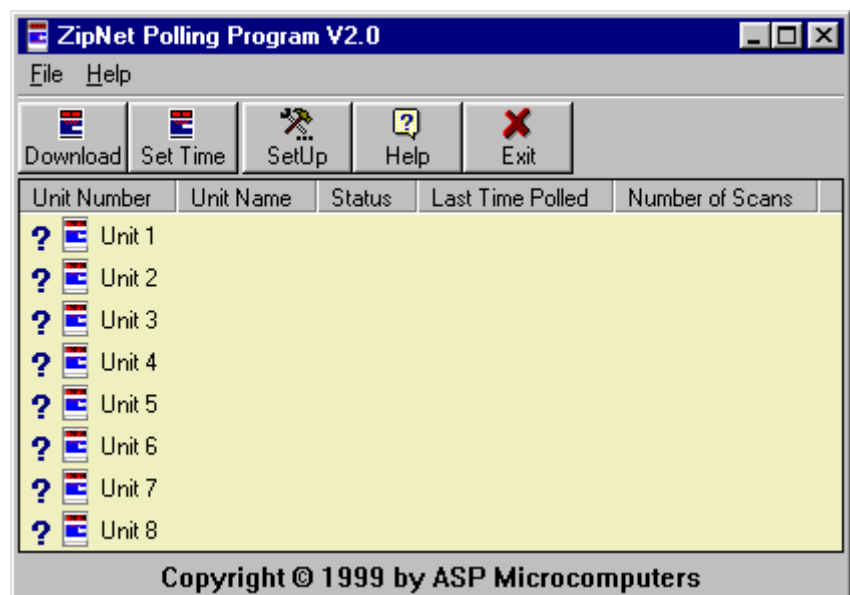
Running the Polling Program

Although ZipNet Polling Program is used in most of the example screens in this manual, there are only minor differences between it and the ClassNet Polling Program. Where there are differences, they are noted.

Shown on the right is the main screen of the Polling Program.

Near the top of the screen, there are five buttons which can be pressed to take you to the various sections of the program.

To manually collect data from the listed



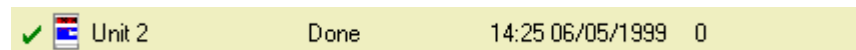
terminals, just press the **Download** button. If you want to set the time displayed on the terminals without collecting the data from then, press the **Set Time** button. The **Help** button displays the program's help file, and the **Exit** buttons terminates the program. The Setup functions are described on the following pages.

In the yellow section of the main screen, you'll see a list of ClassNet or ZipNet Terminal unit numbers that the program has been set to collect data from. While the Polling Program is downloading data, or sending the time to the terminals, the various fields of the main screen will provide status information.

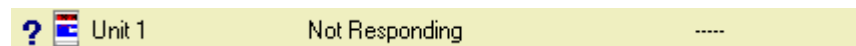
While the Polling Program is communicating with a particular terminal, the line for that unit is highlighted on the screen, a green arrow is displayed to the left of the **Unit Number** column, and the **Status** column shows a “Polling...” message, as shown below.



When a unit has been successfully polled, a green tick is displayed to the left of the **Unit Number** column, the **Status** column shows a “Done” message, the **Last Time Polled** column shows the time and date of the poll, and the **Number of Scans** column shows the number of items downloaded from the terminal.



If, for some reason, a terminal does not respond to a poll, a dark blue question mark is displayed to the left of the **Unit Number** column, and a “Not Responding” message is displayed in the **Status** column.



If the **Number of Retries** option is left at the default of three, the Polling Program will try to poll each terminal up to three times before giving up. After the third unsuccessful poll, a red X will be displayed to the left of the **Unit Number** column.

If the **Number of Retries** is set to 0, the Polling Program will continue to poll the terminals until data is successfully downloaded from all of them.

If you want to stop a download while it is in progress, you can press the ESC key, click your mouse inside the yellow section of the display, click on the Exit button, or click on the X close button on the polling program window. After a short delay, a box will pop up so that you can confirm that you want to stop the download.

If you right-click on a unit number in the yellow section of the screen, the menu shown on the right will appear. This menu allows you to assign a Unit Name to a unit, access the settings screen, or download data from the selected unit or all units.

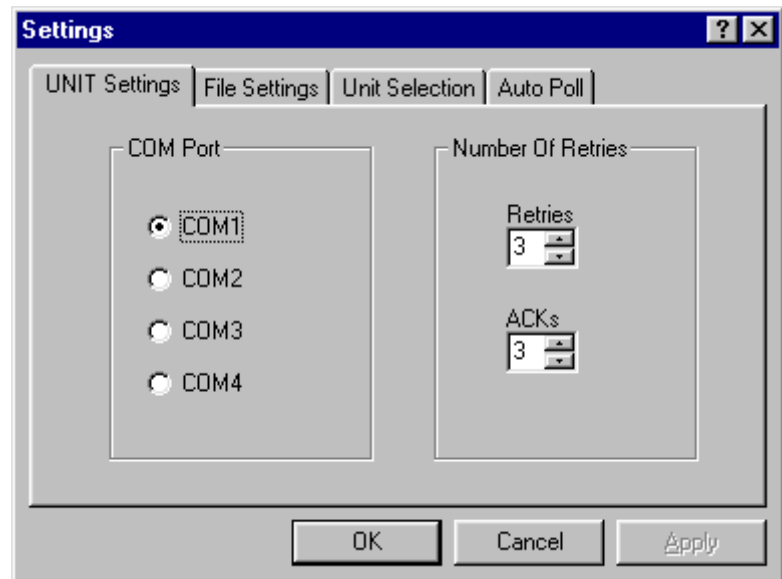


Configuring the Polling Program

Before you can use the ClassNet or ZipNet Polling Program, you need to set it up. Start up the program, and click on the **Setup** button on the main screen to bring up the four section settings screen.

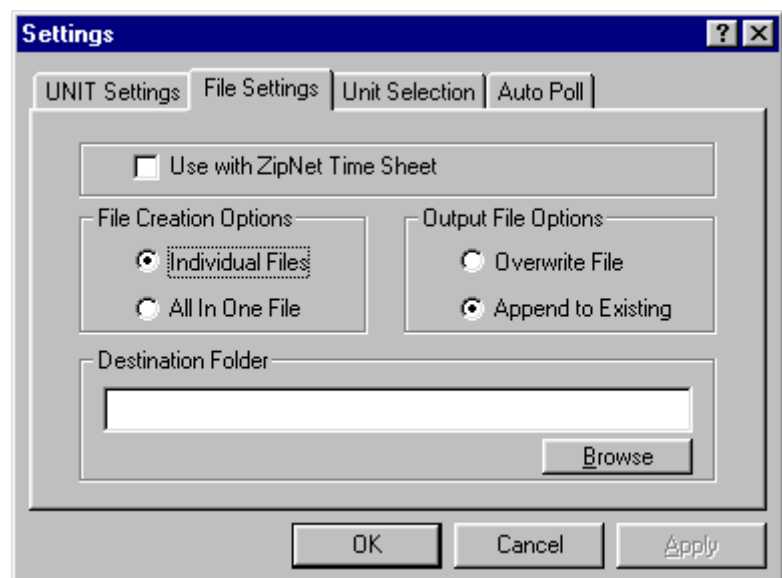
The first section, **Unit Settings**, allows you to set up basic communications parameters, such as which serial port you will be using, and how the program handles minor problems.

The **Retries** setting controls how many times the program will try to communicate with each unit before giving up, and the **ACKs** setting controls how many times the program will try to erase the memory of each unit before giving up. For most applications, these settings should normally be left at their defaults of 3.



The second section, **File Settings**, controls how the data downloaded from the ClassNet or ZipNet Terminals is treated. Note that only the ZipNet version of the program has the **Use with ZipNet TimeSheet** option, and if this option is selected, the **File Creation** and **Output File** options cannot be changed.

File Creation has two options – **Individual Files**, where the data downloaded from each unit is saved in a separate file for each unit, and **All In One File**, where the data downloaded from all units is saved into the one file. If the **Individual Files** option is selected, the **Destination Folder** entry field selects the

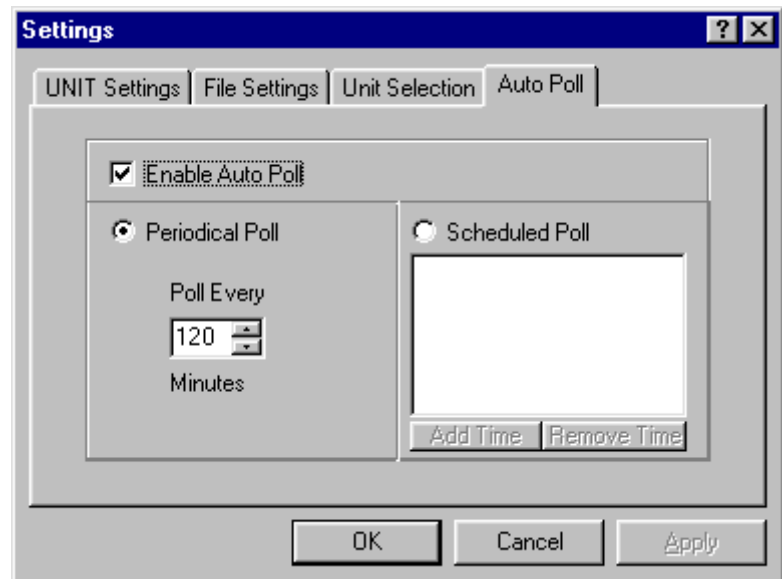


directory that the files will be saved into, and the files will be named **classnet.n** or **zipnet.n**, where the **n** is replaced with the unit number. If the **All In One File** option is selected, the **Destination Folder** entry field selects both the directory and filename of the file that the data will be saved into.

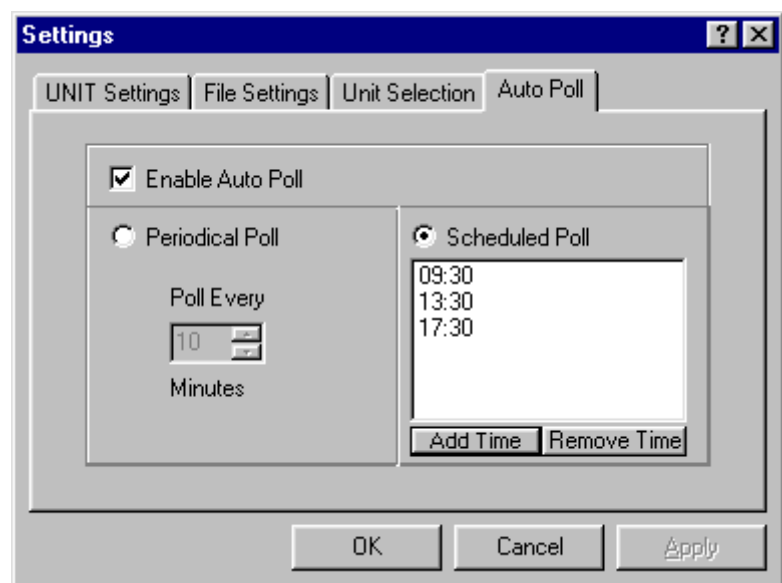
The third part of the **Settings** section, **Unit Selection**, is described in the next section of this manual.

The final section, **Auto Poll**, allows the program to be set up to automatically download data from the ClassNet or ZipNet Terminals.

To operate in the Auto Poll mode, the **Enable Auto Poll** check box must first be ticked, and either the **Periodical Poll** or **Scheduled Poll** buttons must be selected. **Periodical Poll** allows the program to poll the terminals every so many minutes, from 1 minute to 1440 (ie 24 hours). In the example screen on the right, the program has been set to automatically poll every two hours.



The alternative to **Periodical Polling** is **Scheduled Polling**, where the terminals can be polled at specific times during the day. In the example screen on the right, the program has been configured to automatically poll at 9:30am, 1:30pm and 5:30pm. To add times to the list, just click on the **Add Time** button, and to remove times from the list, select the time to remove and click on the **Remove Time** button. Note that times have to be entered in 24 hour format.




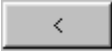
Selecting Units to Poll

When first installed, the Polling Program defaults to polling eight units, units 1 through 8. To change this, you press the **Setup** button on the main screen, then go to the **Unit Selection** tab.

The **Selected Units** section at the right of this screen is a list of the unit numbers that will be polled, while the **Available Units** section at the left contains a list of the remaining (and therefore available) unit numbers between 1 and 98.

The buttons between the two sections of the screen allow you to move units between the two sections.

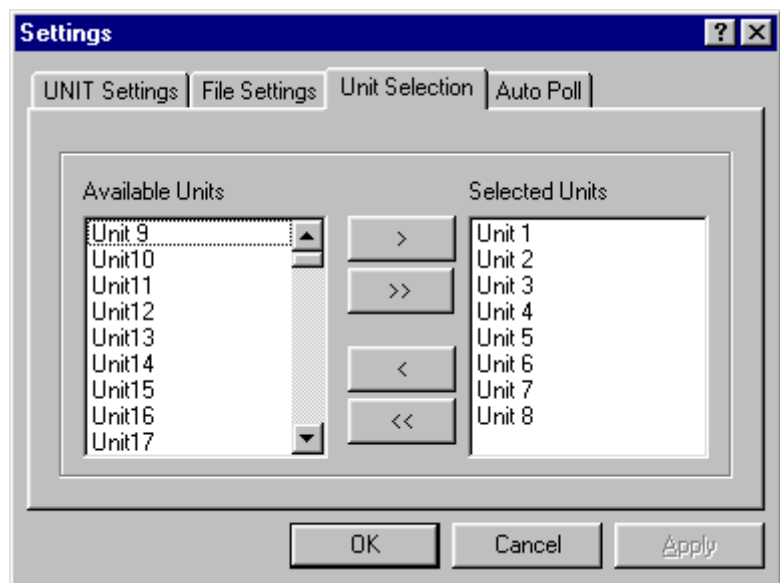
For example, to move Unit 9 into the **Selected Units** list, click on Unit 9 in the **Available Units** list, then click on the  button.

Similarly, to remove Unit 5 from the **Selected Units** list, click on the unit number, then press the  button to transfer it to the **Available Units** list.

The  button moves everything from the **Available Units** list to the **Selected Units** list, and the  button moves everything from the **Selected Units** list to the **Available Units** list.

Double clicking on a unit number will also move it to the other list.

The Polling Program saves all the changes you've made into the system registry, and every time you run the program, it will use the settings you've saved.



Using the Polling Program With ZipNet TimeSheet

The ZipNet Polling Program has been designed to work with ASP's ZipNet TimeSheet Time and Attendance program, to allow you to connect ZipNet Terminals to a different computer to the one that you run the ZipNet TimeSheet program on.

When set up in this manner, the ZipNet Polling Program downloads the data from the ZipNet Terminals and sends the data over your PC LAN to the computer that's running the ZipNet TimeSheet program.

The first thing you need to do is set up the ZipNet TimeSheet program. From ZipNet TimeSheet's main screen, press the **Maintenance Button**



, then select **Download Setup** from the menu that pops up, after which you'll be presented with a screen as shown on the right.

In the Scanner List section, set the **Type** to **Virtual ZipNet** and the **IN/OUT Setting** to **None Kept**. At the bottom of the screen, set **Download Every** to whatever period you decide is appropriate. You can give this configuration a **Name** if you like. You should leave the **Virtual ZipNet File** name set to the default of **virtual.txt** in the ZipNet TimeSheet installation directory unless you have a good reason to change it.

Next, you need to set up the ZipNet Polling Program. In the **File Settings** section of the **Setup** screen, select the **Use with ZipNet TimeSheet** option.

Set the **Destination Folder** entry field to the filename and location you used when you set up the ZipNet TimeSheet above. Note that you can use either a full UNC filename, where

you specify the name of the machine that the file is to be written on (as shown in the example screen on the previous page), or you can use a mapped drive letter (for example, **s:\asp\ziptime\virtual.txt**). If you don't understand these terms, or you don't know which option is most appropriate for your LAN, you should contact your network administrator.

Next, in the **Auto Poll** section of the **Setup** screen, you should select the **Enable Auto Poll** option, and set either a **Periodical Poll** or one or more **Scheduled Polls**.

Once you've made these settings, you can minimize the ZipNet Polling Program, which will shrink it down into the system tray, near the clock display. The ZipNet Polling Program will then automatically collect data from the ZipNet Terminals, and deliver it to the ZipNet TimeSheet program.

Depending on your circumstances, you may want to put the ZipNet Polling Program into the Startup group of your computer so that it runs every time you start the computer.

If for some reason the ZipNet Polling Program can't immediately send the collected data to the ZipNet TimeSheet program (for example, if your PC network is down, or the computer running ZipNet TimeSheet is turned off), the ZipNet Polling Program will keep the data until it is again able to send it to the ZipNet TimeSheet program over your LAN.

Copyright, License & Limited Warranty

The ClassNet and ZipNet Polling Programs are proprietary products of ASP Microcomputers and are protected by copyright laws. Copyright laws prohibit making additional copies of the software for any other person.

ASP Microcomputers grants the purchaser of this software a license to use one copy of the software on a single-user computer, but not to sub-license, rent or lease the software. You may permanently transfer your license to use the software by passing the original disk and manual to another person and simultaneously destroying all copies of the software or documentation in your possession. Such a transfer terminates your license to use the software. The new possessor of the software accepts a license to use the software on the basis expressed here on first use of the software.

ASP Microcomputers undertakes that the software will perform substantially as described herein, and will correct “bugs” notified by licensed users within a reasonable time. Should such “bugs” not be correctable, the only remedy available to you will be return of the software for refund. This warranty is in lieu of other warranties express or implied including but not limited to the implied warranties of merchantability and fitness for purpose. In no event will ASP Microcomputers be liable for damages including loss of profits or other consequential damages arising out of your use or inability to use the software.

This limited warranty gives you specific legal rights. Some states give other rights and/or do not allow excluding or limiting implied warranties or limiting liability for consequential damages. Accordingly, the above limitations/exclusions may not apply to you. If any provision of this agreement shall be void unlawful or unenforceable then that provision shall be severable without affecting the validity of remaining provisions. This agreement is governed by the laws of Victoria, Australia.